

VERDER

CARBOLITE
IGERO

ELTRA

Retsch

QATA

MICROTRAC

ERWEKA



ENABLING PROGRESS

LEARN MORE ABOUT US



| 1959

André Verder starts trading pumps and semi-finished products.

| 1989

RETSCH becomes part of the VERDER Group.

| 1998

RETSCH TECHNOLOGY is founded.

| 2012

ELTRA and CARBOLITE are acquired.

| 2013

GERO extends the portfolio of CARBOLITE in the temperature range up to 3000°C.

| 2015

Acquisition of the company ATM. CARBOLITE and GERO operate under the common brand name CARBOLITE GERO.

| 2018

QNESS becomes part of VERDER SCIENTIFIC.

| 2019

Microtrac and MicrotracBEL are acquired by the VERDER Group.

| 2020

Retsch Technology, Microtrac and BEL become Microtrac MRB. ATM and QNESS unite to QATM.

| 2023

FORMULACTION and ERWEKA become part of the VERDER Group.

VERDER SCIENTIFIC – ENABLING PROGRESS TO THE BENEFIT OF MANY.

As part of the VERDER Group, the Scientific Division sets standards in the development and manufacture of modern, reliable laboratory and analysis equipment.

Our six manufacturing companies support thousands of customers worldwide in realizing the ambition we share: Enabling progress. To the benefit of many.

With our extensive knowledge in the fields of sample preparation, heat treatment and analysis of solids, we empower our customers to make progress. We provide them with the means to effectively and reliably design their processes, products, and services to become safer, more efficient, and more sustainable. The precision of our instruments is the basis for, e. g.,

The six VERDER SCIENTIFIC companies are active worldwide in the fields of:

HEAT TREATMENT
ELEMENTAL ANALYSIS
MATERIALOGRAPHY & HARDNESS TESTING
MILLING & SIEVING
PARTICLE CHARACTERIZATION
PHARMACEUTICAL TESTING

increasing the effectiveness of drugs, producing healthier food, or improving the recyclability of packaging or the safety of aircraft components.

As a company that is 100% family-owned, our only obligation is to staff and customers. That gives us the freedom to act on our own responsibility and plan in the long run. Especially in these fast-moving times, sustainability is an important success factor for us. This is reflected by our high-quality, long-lasting products but also by our employees, many of whom have been part of our success for decades.

What makes us particularly proud: “Making the world a little better every day” is not an empty phrase for us but lived reality and a daily challenge for our more than 1,300 employees.



300 Mio. € revenue



11 production sites worldwide



13 sales organizations



More than 1,300 employees

CARBOLITE®
IGERO 30-3000°C

THE WHOLE WORLD
OF HEATING

**EXPERTS
FOR INDIVIDUAL
SOLUTIONS**



FURNACES ARE OUR PASSION

Ashing, drying, sintering, debinding, annealing – the list of heat treatment processes for which CARBOLITE GERO offers furnaces and ovens could be continued at will.

With two production and sales sites in the UK and Germany, CARBOLITE GERO is perfectly equipped for the development and manufacture of high temperature furnaces up to 3000 °C as well as of standard laboratory products. But even with one of the most varied and extensive offerings of

furnaces and ovens, there are still occasions when a standard design simply does not meet the user's precise requirements. The development of such bespoke variations of the standard for complex heat treatment processes is our specialty. This ability makes us the leading solution provider for customers from fields like aerospace, engineering, material sciences or medicine.

Highly modern with a long tradition – furnaces and ovens from CARBOLITE GERO.

FURNACES AND OVENS UP TO 3.000 °C FOR LABORATORY AND INDUSTRY



AAF ASHING FURNACE



TF TUBE FURNACE

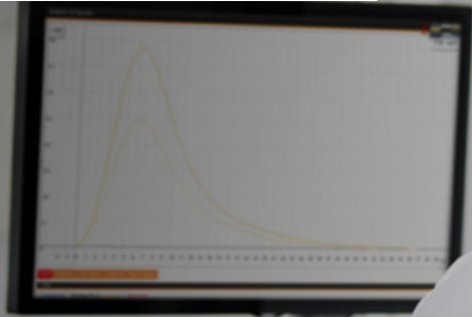


HTK FOR MIM & SINTERING



CUSTOM DESIGN FURNACE

www.carbolite-gero.com



BUILDING ON
PRECISION

**RELIABILITY
TO THE SMALLEST
DETAIL**

ELEMENTAL ANALYSIS

EXACT – ROBUST – DURABLE

Since its foundation in 1981, ELTRA develops and manufactures powerful combustion analyzers for elemental analysis of a wide variety of solids. These are used to reliably, reproducibly and precisely measure concentrations of carbon, sulfur, oxygen, nitrogen or hydrogen. In 2007, thermogravimetric analyzers were added to the portfolio. Today, ELTRA is one of the worldwide leading manufacturers in this sector.

Our customers come from research institutions, universities and industries like food, steel, mining, coal, construction materials or aerospace

where precision and reliability are indispensable. ELTRA analyzers are characterized by their robust design and high functionality for use in a production as well as laboratory environment.

Our formula for success: Based on a combination of proven technology and the extensive experience of our staff we convince our customers with versatile products and dedicated support – and have been doing so for over 40 years.

COMBUSTION ANALYZERS FOR THE DETERMINATION OF C/S, O/N/H AND THERMOGRAVIMETRIC ANALYZERS



CARBON SULFUR ANALYZER
ELEMENTRAC CS-i



NITROGEN ANALYZER
ELEMENTRAC CN-r



THERMAL ANALYZERS
TGA THERMOSTEP



**OXYGEN NITROGEN
HYDROGEN ANALYZER**
ELEMENTRAC ONH-p 2



MATERIALOGRAPHY & HARDNESS TESTING

WITH PASSION AND
COMMITMENT

OPEN FOR NEW
SOLUTIONS

QATM
Epo 250 A1

UNVEILING THE INVISIBLE

Under the common brand name QATM, two of the most innovative companies in the materialography and hardness testing sector, ATM and QNESS, have joined forces. As manufacturers of high-quality machines and software solutions, we know exactly what our customers need.

Our cut-off machines, mounting presses, grinders, polishers/electrolytic etchers as well as hardness testers and analysis systems are designed to ensure safe, efficient and accurate work in the materialographic laboratory. Two specialized and committed teams in Germany and Austria develop

and manufacture the entire product range at the respective premises. With a great deal of dedication and creativity, we produce machines which, thanks to elaborate details, continually optimize operation for the user.

In this process, we never lose sight of the latest technical developments. Topics like connectivity or software-based automation of working steps are high on our agenda.

Focused, creative, dedicated – that's QATM.

MACHINES FOR MATERIALOGRAPHY AND HARDNESS TESTING



**ROCKWELL HARDNESS
TESTER QNESS 150 CS ECO**



**CUT-OFF MACHINE
QCUT 600 A**



**HOT MOUNTING PRESS
QPRESS 50**



**GRINDING & POLISHING
MACHINE QPOL 250 ECO**

www.qatm.com

MORE THAN A CENTURY
OF EXPERIENCE

**QUALITY AND
INNOVATION MADE
IN GERMANY**



THE PIONEERS IN SAMPLE HOMOGENIZATION

RETSCH's success story began more than 100 years ago. With the patent registration for the first mechanic mortar grinder, the company's founder laid the foundation for an unparalleled development. Today, laboratories all over the world use our mills, crushers and analytical sieve shakers to grind, homogenize and characterize samples.

The range of application areas is as wide and versatile as our product offering. From the production of nano particles with a ball mill to processing thousands of kilos in a jaw crusher – RETSCH covers the entire field of size reduction of solid materials.

Instrumental analysis procedures are frequently complex and cost intensive. That is why we share our profound application knowledge with our customers in seminars, workshops and webinars. Because every analysis can only be as good as the previous sample preparation process.

RETSCH is the undisputed global leader in this field – often copied but never matched.

LABORATORY MILLS AND SIEVE SHAKERS FOR SAMPLE PREPARATION AND CHARACTERIZATION OF SOLIDS



JAW CRUSHER
BB 500



KNIFE MILL
GRINDOMIX GM 200



MIXER MILL
MM 500 vario



VIBRATORY SIEVE SHAKERS
AS 200

THREE PILLARS OF EXCELLENCE

PARTICLE CHARACTERIZATION AT ITS BEST



THREE PILLARS OF EXCELLENCE

At Microtrac, we have a passion for making particle analysis accurate, effective, and convenient to exceed customer expectations. MICROTRAC is a technology leader, committed to innovation, with an extensive global network and an unrivaled offering in particle characterization.

Our centers of excellence in Germany, the USA, Japan, and France, allow us to provide our customers with the best analytical instruments for R&D, Quality Control and Product Development.

Our three pillars of excellence:

- | **Particle Size & Shape Analysis:** Dynamic Image Analysis (DIA) and Laser Diffraction (LD)
- | **Stability and Dispersibility Analysis:** Static Multiple Light Scattering (SMLS), Dynamic Light Scattering (DLS), Zeta Potential (ZP) and Charge Titration
- | **Gas Adsorption Measurement:** Determination of Specific Surface and Pore Size Distribution

GAS ADSORPTION, PARTICLE SIZE & SHAPE, STABILITY AND DISPERSIBILITY



SYNC
PARTICLE SIZE AND SHAPE
ANALYZER



CAMSIZER X2
PARTICLE SIZE & SHAPE
ANALYZER



TURBISCAN
STABILITY & DISPERSIBILITY
ANALYZER



BELSORP MAX X
SURFACE AREA & PORE SIZE
DISTRIBUTION ANALYZER

TECHNOLOGY LEADER
FOR MORE THAN 70 YEARS

THE FULL TESTING RANGE FOR SOLID DOSAGE FORMS



POSITION 1	POSITION 2	POSITION 3	POSITION 4
V	V	V	V
R	R	R	R
P	P	P	P
POSITION 2	POSITION 3	POSITION 4	POSITION 5
V	V	V	V
R	R	R	R
P	P	P	P

max. Füllmenge
max. Füllhöhe
niveau max. 40
caudal max. 10 ml

SETTING BENCHMARKS IN THE TABLET TESTING INDUSTRY

ERWEKA is a leading international manufacturer of testing equipment for the pharmaceutical industry. We supply equipment for tablet development and quality control testing to major pharmaceutical and life science companies, development and contract laboratories, and universities around the world.

ERWEKA is the only company in the industry to offer the full range of solid dosage form testing equipment. We are the manufacturer with the most extensive product range and experience in the tablet testing equipment industry. Our benchmark is top quality. From development to design and manufacturing to service for our instruments, we are uncompromising in our

commitment to premium standards. We stand for excellent product quality, appealing design and individual customer support. Our customers have been relying on us for over 70 years. With general-purpose equipment for pharmacists' needs, which we were the first company in the world to develop and produce in 1951, we laid the foundation for our broad product range. Today, we are the manufacturer with the most comprehensive automation offering for performing the most common testing procedures according to the harmonized pharmacopoeias.

ERWEKA customers around the world benefit from these decades of experience and the technologies we have developed.

TABLET TESTING DEVICES FROM THE SEGMENTS DISSOLUTION, PHYSICALS & R&D TESTING



**ROBODIS II+ AUTO.
DISSOLUTION SYSTEM**



**DT 950 DIGITAL
DISSOLUTION TESTER**

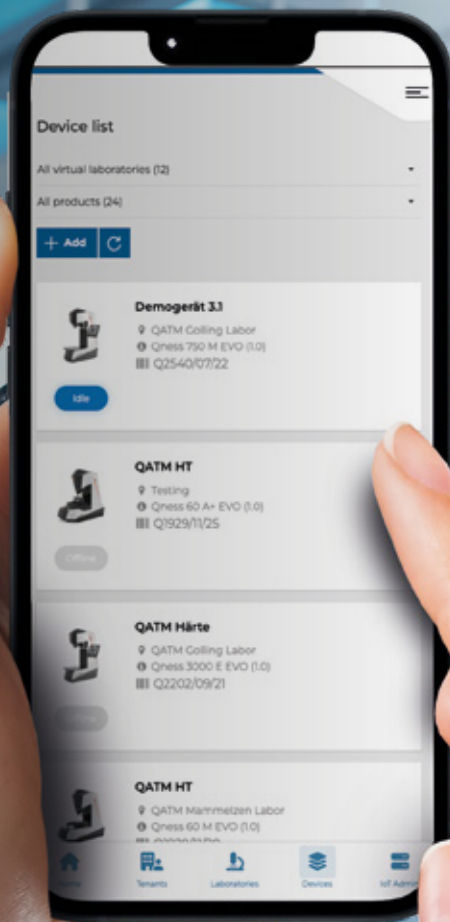


**MULTICHECK 6
HARDNESS TESTER**



AR 403 CUBE MIXER

www.erweka.com



SOLUTIONS FOR YOUR LABORATORY

SMART INSTRUMENTS THAT IMPROVE EVERYDAY LIFE IN THE LAB

DISCOVER THE FUTURE OF CONNECTIVITY WITH THE VERDER SCIENTIFIC IOT PLATFORM

Our cutting-edge initiative integrates Verder Scientific products into a cloud solution, providing you with enhanced functionalities and seamless connectivity, providing you with meaningful technical solutions to enhance their day-to-day operations and streamline your labs efficiency with automatic backups and remote access to your reports and data.



YOUR VIRTUAL LABS

Get the most out of existing instruments and produce reproducible, high-quality analyses that meet increasing regulatory requirements.



MAXIMIZE USE & REDUCE DOWNTIMES

Get notified when, e. g., measurements are completed, operations are interrupted, or maintenance is required.



KEEP YOUR DEVICE SOFTWARE UP TO DATE

Updating your software via our IoT platform is a simple and straightforward process which ensures that you always have access to the most up-to-date features and improvements.



BACKUP & RESTORE

Define what you want to store centrally (program directory with or without other data) and quickly restore your system in an emergency.



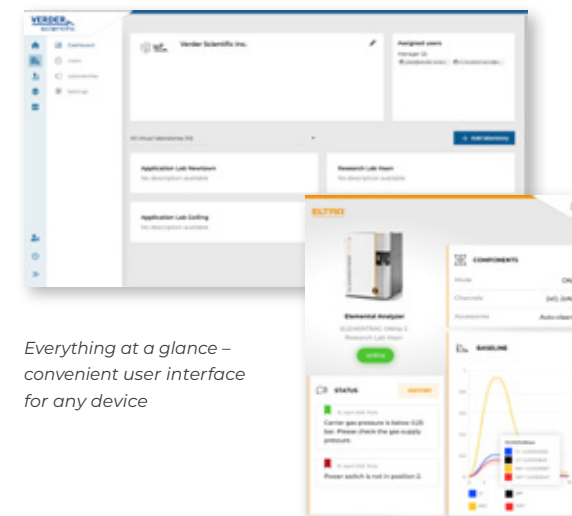
SERVICE & DIAGNOSTICS

Monitor the correct status and maintain verifiable and reproducible analysis quality. If external help is needed, simply provide our service engineers with the log files, or give them access to your analyzer.



AUTOMATE REPETITIVE TASKS

To help you spend more time on the essentials, we offer a range of automation solutions for repetitive tasks.



Everything at a glance – convenient user interface for any device



START EXPLORING!

Interested in learning more about the Verder IoT Platform? Scan the QR code and discover our solutions.

An aerial photograph of a winding asphalt road that curves through a dense, lush green forest. The road starts from the bottom left, curves upwards and to the right, then loops back to the left, and finally curves downwards and to the right again. The forest is thick with various shades of green, suggesting a healthy, mature ecosystem. The lighting is bright, creating a high-contrast scene with some shadows on the road surface.

VERDER ESG STRATEGY

OUR ENVIRONMENTAL, SOCIAL & GOVERNANCE PROMISE

THE FOUNDATION OF OUR ESG STRATEGY – WE TAKE RESPONSIBILITY

Previously, we explained how our solutions make a difference on the customer side. Now, we turn to our promise on what we can consciously do to support the Sustainable Development Goals (SDG) defined by the United Nations. Starting with the SDGs, we have created an environmental, social and governance (ESG) promise. The overview below shows Verder Group's ESG promise, followed by the target associated with each promise.

ENABLE REDUCED ECOLOGICAL FOOTPRINTS

Short/mid-term promise

- | Energy-neutral own buildings
- | Implement ISO 14001 in our production facilities
- | Recycle & re-use in all our facilities
- | Greener travel
- | Water consumption management
- | A tree for every employee

Longer-term ambition

- | All Verder buildings energy neutral
- | Cradle-to-cradle design thinking for all our products
- | Conscious purchasing

ENABLE PEOPLE'S PROGRESS & WELLBEING

Short/mid-term promise

- | Safe & secure working environment
- | Fruits & sports initiatives
- | Increase & improve digital learning
- | Support inclusive teams
- | Donate to charity for children & education
- | Sponsor our local communities on education & sports

Longer-term ambition

- | Wellbeing as a continuous process
- | Set up a program to continuously educate specific focus groups

ENABLE RESPONSIBLE CONDUCT

Short/mid-term promise

- | Train 100% of our people yearly on our Purpose & DNA
- | Train 100% of our people on Verder's CoBP every 3 years
- | Train relevant people yearly on compliance topics
- | Pragmatic reporting on ESG and as of 2025 CSRD report yearly published

Longer-term ambition

- | Training as a continuous process

family

responsibility

improve

GO
TO THE
SOURCE

detail

passion

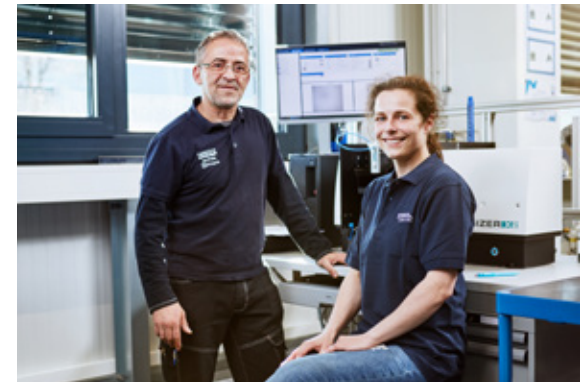
THE VERDER DNA

WE GO TO
THE SOURCE

OUR CORPORATE CULTURE: TOGETHER WE'RE STRONG.

As part of the Verder Group, we take the initiative with an entrepreneurial mindset, never losing sight of the individual. Diversity is highly valued in our international organisation. We work together like a **family**: we are interested in our colleagues and in their personal and professional development. We trust and support each other on a daily basis. We communicate openly and honestly and stand by our decisions. We talk to people rather than about them and treat one another with respect. We never put our own advantage above the overall interest. We assume **responsibility** in challenging situations and invest our entire capacity in finding solutions together.

We tackle problems fearlessly, rather than leaving the solution to others. We work on our tasks with **passion** and conviction because work is for us an important source of satisfaction and impacts on our lives and the lives of our customers. We want to understand fully and exactly. **We go to the source** and pay attention to every **detail**, without forgetting the bigger picture. We prepare decisions and take them based on facts and objectives. We are pragmatic, focused and competitive. We are problem-solvers and decision-makers, with personalities but not egos. We act in the company's interest and learn from our mistakes in order to continue **improving**.



OUR PEOPLE

Our people are the foundation of our success and the calling card of our company. At Verder Scientific, a diverse group of professionals come together to bring all of their knowledge and passion to provide our customers around the world with the best solution for their application.

KNOWLEDGE TRANSFER FOR CUSTOMERS AND PARTNERS

The VERDER SCIENTIFIC companies see themselves as solution providers. We offer competent application support and technical assistance and share our knowledge and expertise with our customers in **seminars, webinars and workshops.**

Our customers benefit from individual process and application consulting. Our application experts process and measure your samples in our **in-house application laboratory** and provide recommendations for the most suitable method and instrument.



APPLICATION CONSULTING

Processing and measuring samples in our in-house laboratories



SEMINARS & WEBINARS

Expert knowledge for your application.



KNOWLEDGE BASE

Detailed information about a wealth of applications.

WE ARE HERE FOR YOU – ANYTIME ANYWHERE!

GERMANY (HEADQUARTER)

Verder Scientific GmbH & Co. KG
Retsch-Allee 1-5
42781 Haan
T +49 (0)2104 2333-500
E info@verder-scientific.com

AUSTRIA

Verder Scientific Austria GmbH
Reitbauernweg 26
5440 Golling
T +43 6244 32082
E info.at@verder-scientific.com

BELGIUM & THE NETHERLANDS

Verder Scientific Benelux BV
Kontichsesteenweg 17
2630 Aartselaar
T +32 3 870 96 40
+31 30 677 92 61
E info@verder-scientific.be
info@verder-scientific.nl

BRAZIL

Verder Scientific Comércio
de Equipamentos Ltda.
Rua Continental number 146
09750-060 São Bernardo do Campo
São Paulo
T +55 11 4391 4145
E contato@verder-scientific.com.br

CHINA

Verder Shanghai Instruments
and Equipment Co., Ltd.
Building No. 15, Lane 739
Kangwei Road, Pudong District
201315 Shanghai
T +86 10 82608745
E info@verder-group.cn

FRANCE

Verder SARL
8 Allée Rosa Luxembourg
Immeuble Arizona 95610
Eragny-sur-Oise
T +33 (0)1 34 64 31 11
E verder-info@verder.fr

GREAT BRITAIN

Verder Scientific UK Ltd.
Parsons Lane Hope
S33 6RB Hope Valley
T +44 (0)845 458 5196
E info.uk@verder-scientific.com

INDIA

Verder Scientific Pvt. Ltd
Plot No – 5A/10-11, 1st Floor
ID Nacharam, Road # 1
Uppal Mandal, Hyderabad, 500076
T +91 40 2980 6688/89/90
E info@verder-scientific.co.in

ITALY

Verder Scientific S.r.l.
Via Pino Longhi, 12
24066 Pedrengo (BG)
T +39 035 19913800
E info@verder-scientific.it

JAPAN

Verder Scientific Co., Ltd.
5-8-8, Shinjuku
160-0022 Shinjuku-Ku
Tokyo
T +81 3 5367 2651
E info@verder-scientific.co.jp

SOUTH AFRICA

Verder Scientific Pty Ltd
10 Village Crescent
Linbro Business Park
Johannesburg
Gauteng 2065
T +27 (010) 6120141 (Johannesburg)
+27 (0860)109 259 (Cape Town)
+27 (010) 6120141 (Exports)
E sales@verder-scientific.co.za

USA

Verder Scientific Inc.
11 Penns Trail
Newtown, PA 18940
T +1 866-473-8724
E info-us@verder-scientific.com

SPAIN

Verder Scientific Iberia
Polígono Industrial Azitain, Parcela 3A
20600 Eibar, Gipzkoa
T +34 843930293W



For your information:

You will find the complete country selection on our websites.

VERDER SCIENTIFIC GmbH & Co. KG

Retsch-Allee 1-5
42781 Haan
Germany

Phone: +49 2104 2333-500
info@verder-scientific.com

www.verder.com



VERDER

VERDER SCIENTIFIC is composed of leading laboratory equipment companies active in sample preparation and analysis for quality control as well as research & development purposes.

As trusted solution partner, VERDER SCIENTIFIC enables thousands of companies to ensure economic, technological and environmental progress by mastering their scientific applications. Together, we make the world a healthier, safer and more sustainable place.



ENABLING PROGRESS

